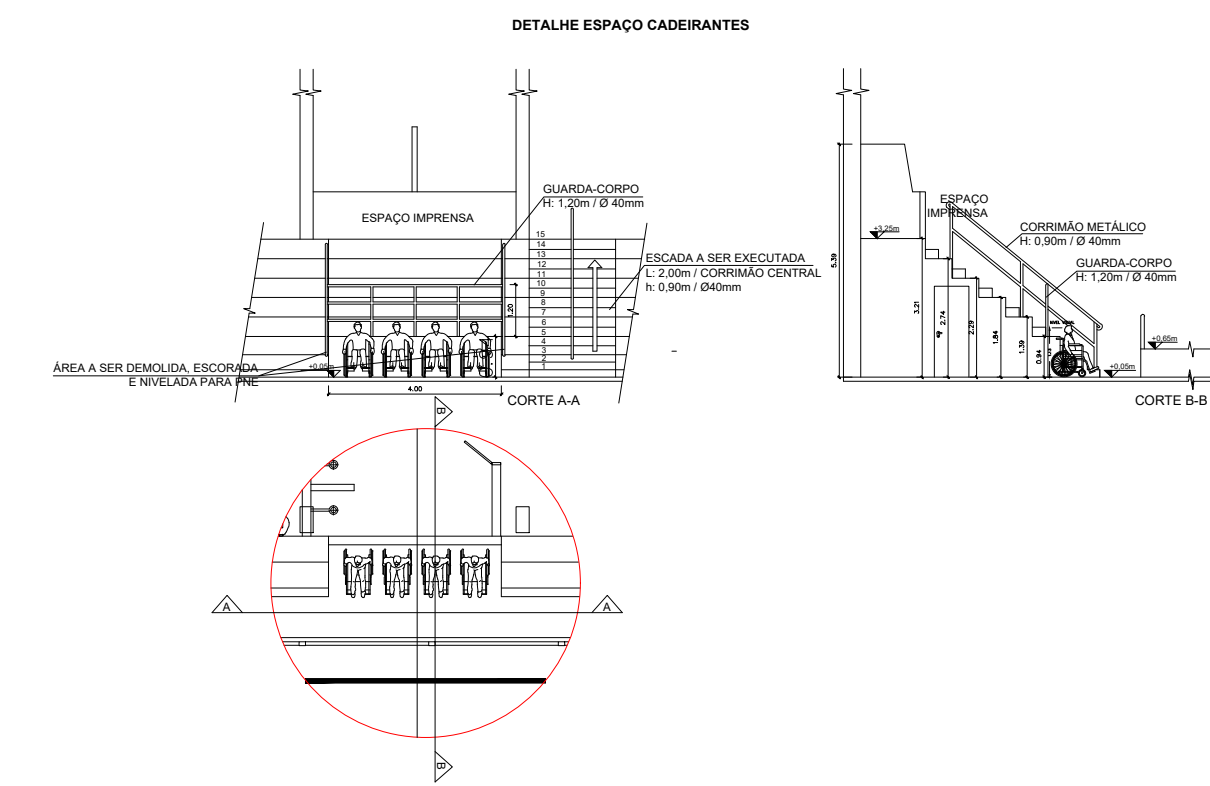
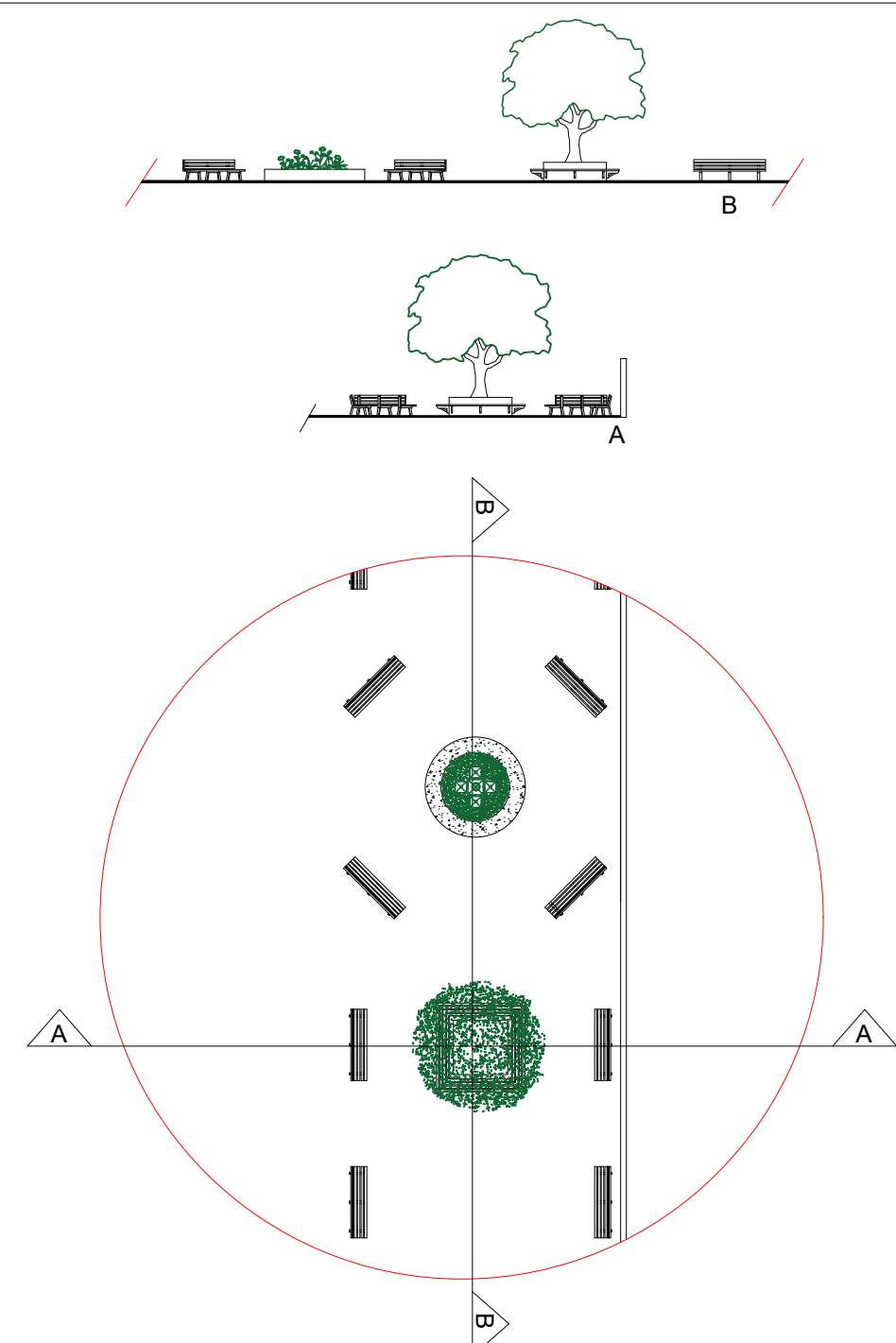


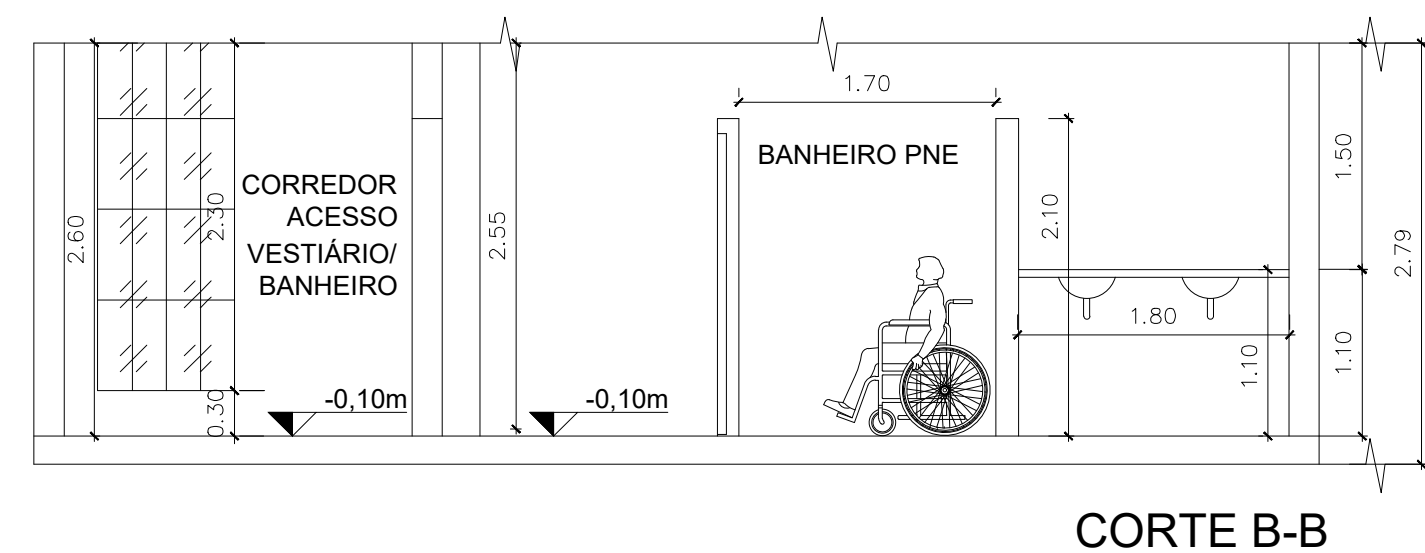
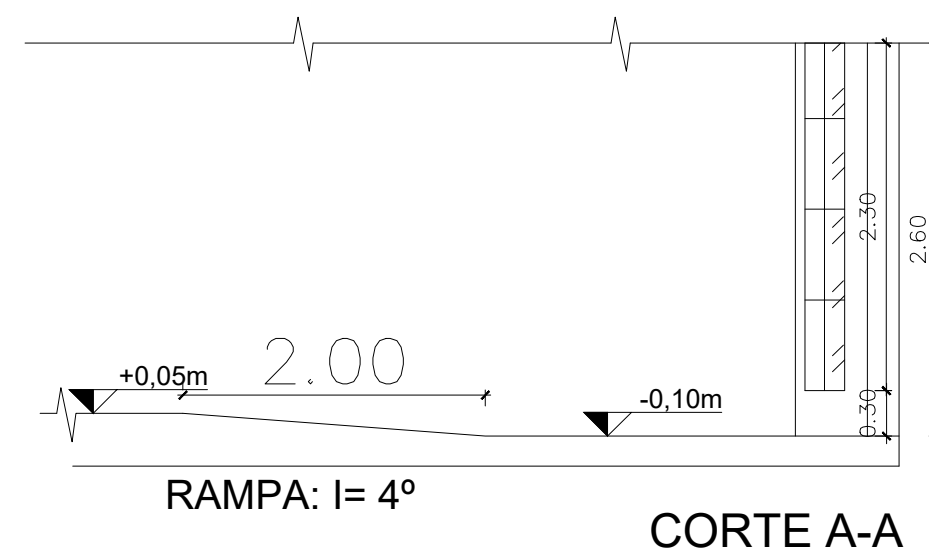
DETALHAMENTO VISÃO GERAL
Esc.:1/50



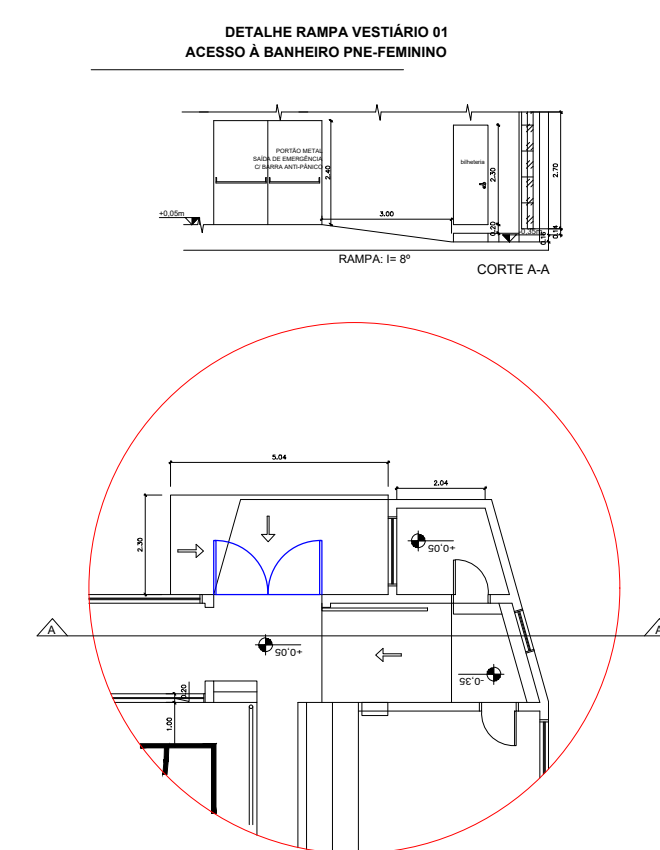
DETALHAMENTO ESPAÇO CADEIRANTES
Esc.:1/50



DETALHE RAMPA VESTIÁRIO/BANHEIRO 03 ACESSO À BANHEIRO PNE-FEMININO

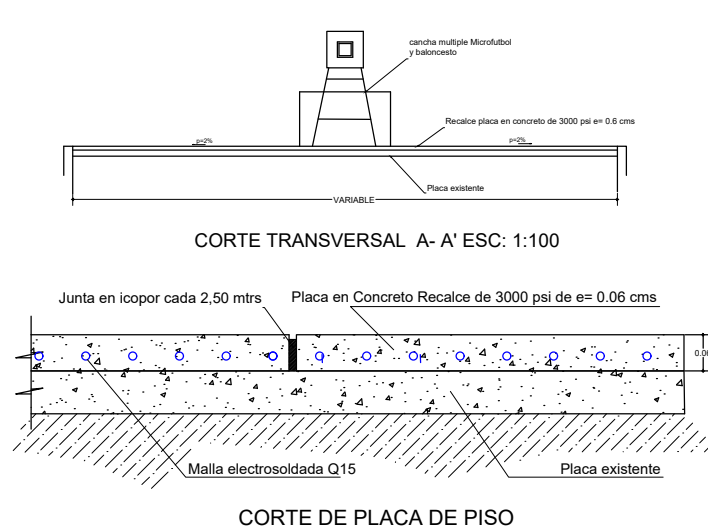


CORTES
Esc.:1/50

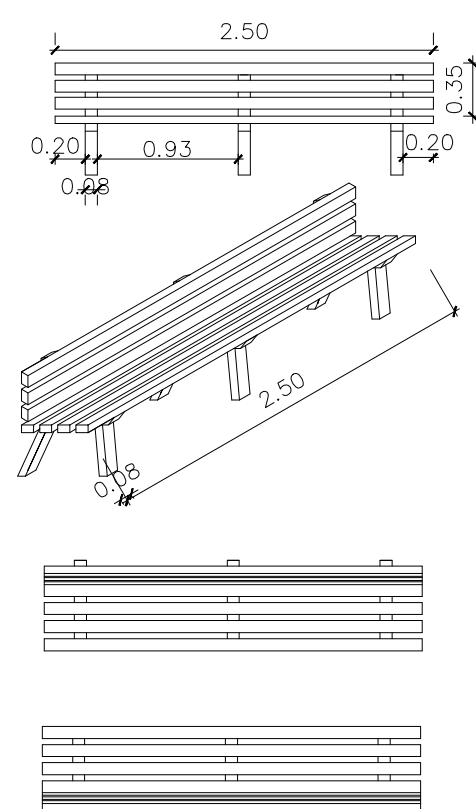


DETALHAMENTO RAMPA/VESTIÁRIO
Esc.:1/50

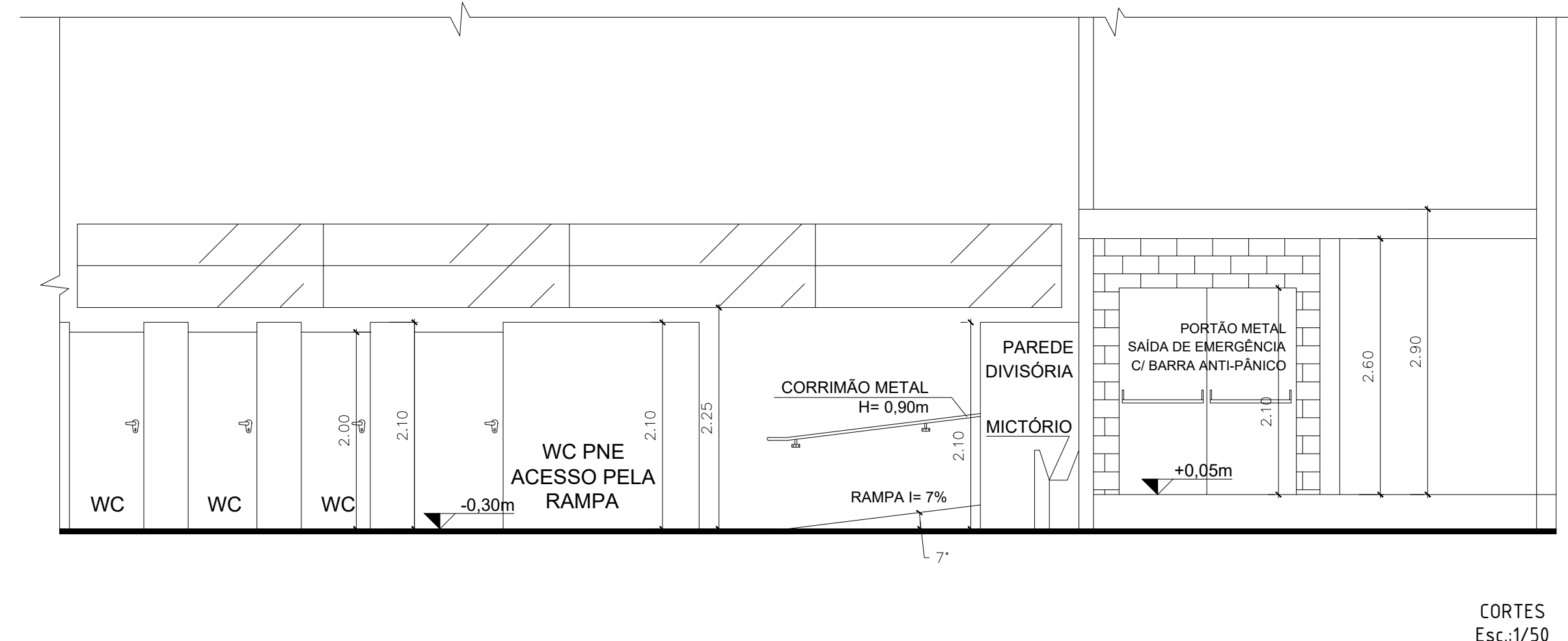
DETALHES DE ESTRUTURA METALICA SEM ESCALA



DET. METALICOS ESTRUTURAIIS
Esc.:1/250



DET. BANCOS
Esc.:1/50



CORTES
Esc.:1/50



PREFEITURA MUNICIPAL DE QUARAÍ

AVENIDA ARTIGAS, 310, CENTRO
CNPJ: 88.123.492/0001-53

Data: AGOSTO/22

Escala: Indicada

Área: 1.099,00m²

Prancha: 04/04

PROJETO DE REFORMA E ADEQUAÇÃO
GINÁSIO HERÁCLITO DE OLIVEIRA JÚNIOR

CORTES E DETALHAMENTOS ÁREAS EXTERNAS

Rua Coronel Miguel Corrêa, 493 - Quaraí/RS

JEFERSON DA SILVA PIRES
PREFEITO

ANDRÉ MACHADO LEITE
Eng. Civil
CREA/RS 215.884